

PharmaJet®



Injector-0.1mL



Syringe-0.1mL
Needle-free



Filling Adapter

Helpful Tips

Important:

Before you use your PharmaJet Tropis Needle-free Injection device, please read the Instructions For Use and these Helpful Tips completely. Follow the directions carefully when using the Tropis device.



Refer to Instructions for Use to ensure safe injections and to review risks.

Verify if the Injector is in the charged or uncharged state by confirming the position of the Injector Hammer.

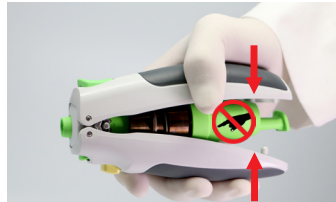


Uncharged

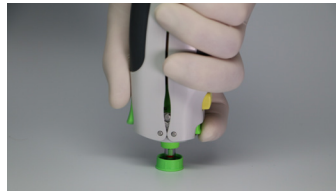


Charged

DO NOT open the Handles when the Injector is charged. If the Injector is charged and the Handles are open, DO NOT touch internal components; close the Handles.



After an injection, eject the Syringe and keep the Injector closed for storage.



DO NOT dry fire the Injector. Repeated dry firing will damage the Injector. Dry firing is activating the Injector with either an empty Syringe or without a Syringe.



Cleaning, Disinfecting, Storage, and Disposal

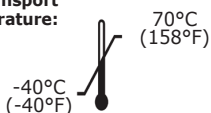
CLEANING & DISINFECTING: The Injector may be cleaned by wiping the exposed surfaces using 70% Isopropyl Alcohol.

STORAGE: It is recommended to store the Injector in the uncharged and closed configuration, in the protective case.

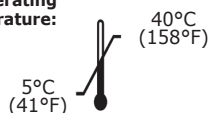
NOTE: The Injector is resistant to short term duration exposure to water.

DISPOSAL: Dispose of used devices in accordance with local requirements.

Storage and Transport Temperature:



Operating Temperature:



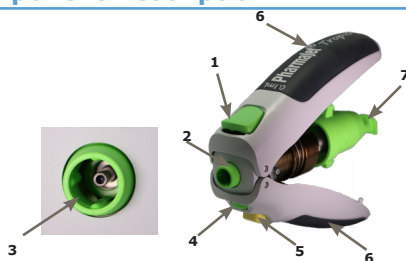
Reorder Information

Item	Catalog #
Injector	C503-10
Syringes – 100 Single Units	C503-34
Syringes – 100 Bulk Units	C503-35
Syringes – 200 Bulk Units	C503-36
Filling Adapters – 100 Single Units	C503-42

Component Description

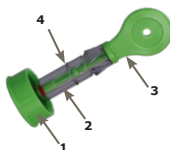
Injector

1. Activation Button
2. Inner Core Housing
3. Hammer
4. Eject Button
5. Safety Button
6. Handles
7. Latch Button



Syringe

1. Syringe Cap
2. Syringe Barrel
3. Syringe Plunger
4. Fill Line



Filling Adapter

1. Syringe Interface
2. Filling Adapter Spike

